

SCANDIC SPECTRUM

General

- Free WiFi throughout the hotel
- 2 bars and 2 restaurants
- Wellness and pool
- Shop open 24 hours
- Modern fitness facilities
- Parking under the hotel (fees apply)

Rooms

- 632 rooms
- 40 disability-friendly rooms
- Online check-out

Meeting, conference and banquet

- 4 event rooms on the ground floor
- 9 meeting rooms on the 6th floor
- Modern AV equipment
- Breakout areas

Location

- 850 m to Copenhagen Central Station
- 1 km to Copenhagen City Hall Square
- 9.6 km to Copenhagen Airport

Experience a brand-new hotel buzzing with life. Where people from all over the world meet the locals for coffees, cocktails and concerts. We live where the water meets the city. With amazing views and Copenhagen at your feet.

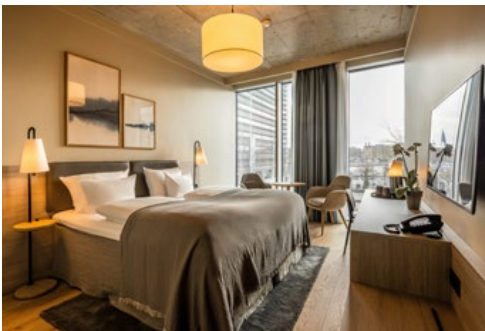
With Scandic Spectrum, we created just the sort of hotel we ourselves dream of checking into. A place, not just for sleeping ...but for being.

We are named the way we are for a reason: At Scandic Spectrum everyone is welcome, and we cover the entire spectrum: From coffee bar on the ground floor to rooftop bar on 6th. From Nordic stone baked pizza and the great green kitchen. What both restaurants have in common is amazing taste, sustainability, and a love for top notch Nordic ingredients

These are lofty surroundings in more than one sense of the word. We have room for you to enjoy life with sustainability at its core. As part of the only hotel chain in Denmark awarded with the Nordic Swan Ecolabel, it is second nature for us to consider both people and planet, and meet the environmental standards regarded as the highest in the world.

In our wellness center, you can go for an hour on the yoga mat, spinning, a workout with the newest gear, or a swim in the 25-meter pool. Or why not book a treatment with one of our wellness therapists – or simply enjoy the luxurious surroundings.

Scandic Spectrum – LIVE A LITTLE

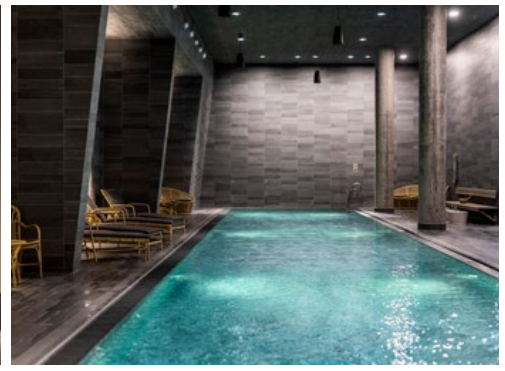


The only hotel chain in Denmark with Nordic Swan ecolabel


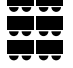







Organic Cuisine Label

Scandic



We can host conferences and events as large as 300 people and banquets also up to 300. On the ground floor, we have a dynamic event space which can be divided into 4 separate rooms or opened up into one big space with room for larger events (350 persons) On top floor, we have 9 meeting rooms in varying sizes – many overlooking the waterfront. You can access outdoor terrasses, cozy breakrooms, and creative break-out areas for smaller meetings or group activities.

No./name	m ²	Theatre 	Classroom 	Cabaret 	U-shape 	Boardroom 	Banquet 	Blocks of 6 
Ground floor								
Event 1	71	50	34	30	20	20	40	24
Event 2	81	70	46	30	30	20	50	36
Event 3	81	70	46	30	30	20	50	36
Event 4	81	70	46	30	30	20	50	36
Event 1+2	145	146	80	60	40	–	100	56
Event 2+3	156	146	96	60	40	–	100	72
Event 3+4	156	146	96	60	40	–	100	72
Event 1+2+3	223	280	126	90	50	–	180	108
Event 2+3+4	234	280	142	90	50	–	180	108
Event 1+2+3+4	301	310	176	190	60	–	240	144
Event 1+2+3+4 +breakout areas*	510	350	190	190	60	–	300	180
Nabo**	67	40	24	–	22	20	–	30
6th floor with access to rooftop								
Meeting room 1	21	–	–	–	–	8	–	–
Meeting room 2	22	–	–	–	–	8	–	–
Meeting room 3	20	–	–	–	–	8	–	–
Meeting room 4	40	40	26	24	20	14	30	–
Meeting room 5	47	40	26	24	20	14	30	–
Meeting room 4+5	–	70	54	48	32	28***	60	–
Meeting room 7	57	50	30	32	22	22	40	24
Meeting room 8	58	50	30	32	22	22	40	24
Meeting room 9	57	50	30	32	22	16	40	24
Meeting room 7+8	112	100	60	64	42	32	80	48
Meeting room 8+9	112	100	60	64	42	32	80	48
Meeting room 7+8+9	168	180	100	80	62	–	120	90
Meeting room 10	103	90	44	48	18	–	60	42

*When booking all four event spaces incl. the breakout area for up to 420 persons, serving of refreshments is not possible. This set-up is suitable for ect. lectures.

**No daylight.

***At 2 tables.

DIMENSIONS AND TECHNICAL SPECIFICATIONS

Name of room	Total m ²	Length (m.)	Width (m.)	Height (m.)	Usable height (m.)
Ground floor					
Event 1	71	11,3	6,0	5.6	4,2
Event 2	81	11,3	6,9	5.6	4,2
Event 3	81	11,3	6,9	5.6	4,2
Event 4	81	11,3	6,9	5.6	4,2
Nabo	67	6,3	4	2,5	2,5
Floor 6					
Meeting 1	21	6,1	3,6	3.5	3,5
Meeting 2	22	5,8	3,8	3.5	3,5
Meeting 3	20	5,7	3,6	3.5	3,5
Meeting 4	40	6,7	5,7	4.0	4,0
Meeting 5	47	7,0	6,4	4.0	4,0
Meeting 7	57	8,2	6,9	3.2	3,2
Meeting 8	58	8,2	6,9	3.2	3,2
Meeting 9	57	8,2	6,9	3.2	3,2
Meeting 10	103	13,6	7,5	5.2	2,3
Rooftop Terrace West	212	15,5	13,2		
Rooftop Terrace East	275	17,3	15,2		

General

All rooms are equipped with Creston touch panels to control technical equipment. Everything is set up in a simple layout, making it easy to run the meeting as planned.

In addition, all rooms are equipped with Network connectors if a wired Internet connection is required for your event. Network connectors and other connections are generally located as close as possible to where the person running the meeting is placed. The special event rooms are additionally equipped with power outlets for larger events.

Event 1

- Screen size: Lissau 400x225 (16:9) wide, drop 20 cm
- Projector: Panasonic PT-RZ970LWEJ, 10000 ANSI lumen, WUXGA laser, 3 chip
- Extra projector: 2 x Panasonic PT-MZ10KL, Laser, full HD, 10.000 3xLCD
- Loudspeakers: 4 x Bose DesignMax DM6C, ceiling x 6 & Bose MA12EX column

Event 2

- Screen size: Lissau 400x225 (16:9) wide, drop 20 cm
- Projector: Panasonic PT-RZ970LWEJ, 10000 ANSI lumen, WUXGA laser, 3 chip
- Loudspeakers: 6 x Bose DesignMax DM6C, ceiling

Event 3

- Screen size: Lissau 400x225 (16:9) wide, drop 20 cm
- Projector: Panasonic PT-RZ970LWEJ, 10000 ANSI lumen, WUXGA laser, 3 chip
- Loudspeakers: 6 x Bose DesignMax DM6C, ceiling

Event 4

- Screen size: Lissau 400x225 (16:9) wide, drop 20 cm
- Projector: Panasonic PT-RZ970LWEJ, 10000 ANSI lumen, WUXGA laser, 3 chip
- Loudspeakers: 6 x Bose DesignMax DM6C, ceiling

Nabo

- Screen size: Lissau 244x153 (16:10) tapention - drop 40
- Projector: Panasonic VMZ50EJ, 5000 lumens WUXGA 3LCD Laser projector
- Loudspeakers: Bose DesignMax DM5C - 5,25 " x 3

Floor 6

Meeting 1

- Screen: SAMSUNG QM75R 75" UHD 16:9 edge-LED 500nits 24/7 Speakers 2x10W black DVI-D 2xHDMI 2.0 DP RS232
- Network access: Ethernet WiFi SSSP6
- Videoconferencing
- Clickshare

Meeting 2

- Screen: SAMSUNG QM75R 75" UHD 16:9 edge-LED 500nits 24/7 Speakers 2x10W black DVI-D 2xHDMI 2.0 DP RS232
- Network access: Ethernet WiFi SSSP6
- Videoconferencing
- Clickshare

Meeting 3

- Screen: SAMSUNG QM75R 75" UHD 16:9 edge-LED 500nits 24/7 Speakers 2x10W black DVI-D 2xHDMI 2.0 DP RS232
- Network access: Ethernet WiFi SSSP6
- Videoconferencing
- Clickshare

Meeting 4

- Screen: SAMSUNG QM98N 98" UHD 16:9 edge-LED 500nits Speakers 24/7 black DVI-D DP 1.2 2xHDMI 2.0 RS232 RJ45 SSSP6 Tizen Player OS VESA
- Loudspeakers: 4 x Bose DesignMax DM5C - 5.25"

Meeting 5

- Screen: SAMSUNG QM98N 98" UHD 16:9 edge-LED 500nits Speakers 24/7 black DVI-D DP 1.2 2xHDMI 2.0 RS232 RJ45 SSSP6 Tizen Player OS VESA
- Loudspeakers: 4 x Bose DesignMax DM5C - 5.25"

Meeting 7

- Screen size: Lissau 320x200 (16:10) wide, drop 40 cm.
- Projector: Panasonic PT-MZ770EJ, WUXGA LASER, 8000 ANSI lumen
- Loudspeakers: 4 x Bose DesignMax DM5C - 5.25"

Meeting 8

- Screen size: Lissau 320x200 (16:10) wide, drop 5 cm.
- Projector: Panasonic PT-MZ770EJ, WUXGA LASER, 8000 ANSI lumen
- Loudspeakers: 4 x Bose DesignMax DM5C - 5.25"

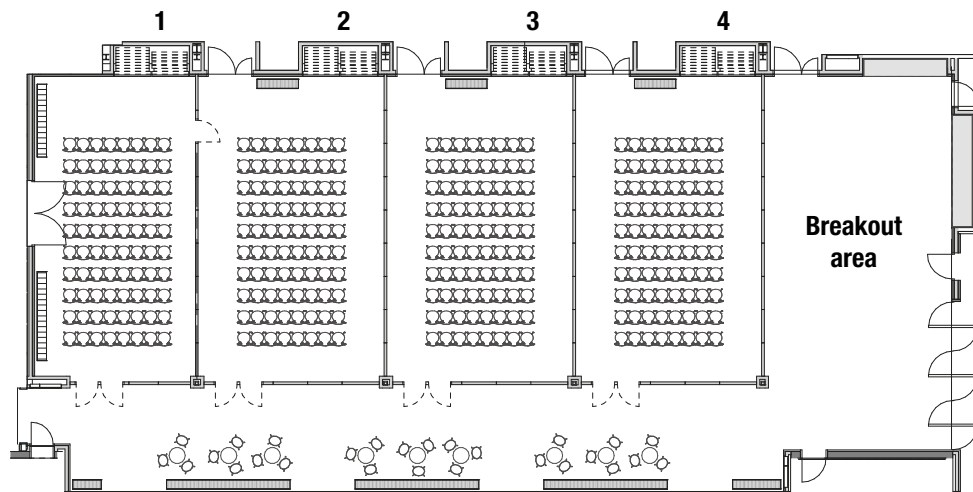
Meeting 9

- Screen size: Lissau 320x200 (16:10) wide, drop 5 cm.
- Projector: Panasonic PT-MZ770EJ, WUXGA LASER, 8000 ANSI lumen
- Loudspeakers: 4 x Bose DesignMax DM5C - 5.25"

Meeting 10

- Screen: Samsung Full HD 288x162
- Loudspeakers: 7 x Bose DesignMax DM5C - 5.25"

Ground floor – Events Area



6th floor – Meeting Rooms

